

Pine Island Lake Drain (#196)

Board of Determination

February 21, 2019

Kalamazoo County Drain Commissioner

Patricia A.S. Crowley, PhD (Drain Commissioner)

Jeffrey D. VanBelle (Deputy Drain Commissioner)



Presentation Overview

- Why Are We Here?
- Drain Overview / History
- Drainage Issues
- Potential Improvements
- What Happens Next?

Why Are We Here?

- Kalamazoo County Drain Commissioner (KCDC) received a petition from 29 freeholders of land dated July 29, 2018 for the maintenance and improvement of the Pine Island Lake Drain.
- Michigan Drain Code Act 40 of 1956, as amended, mandates that as part of the petition process, the Drain Commissioner must schedule and hold a Board of Determination (BOD).
- BOD will hear all testimony and determine if a project is necessary based on public health, welfare or convenience.



Drain Overview

- Pine Island Lake Plat is located in Section 16, Township 3 South, Range 12 West, Texas Township.
- Pine Island Lake Drainage District



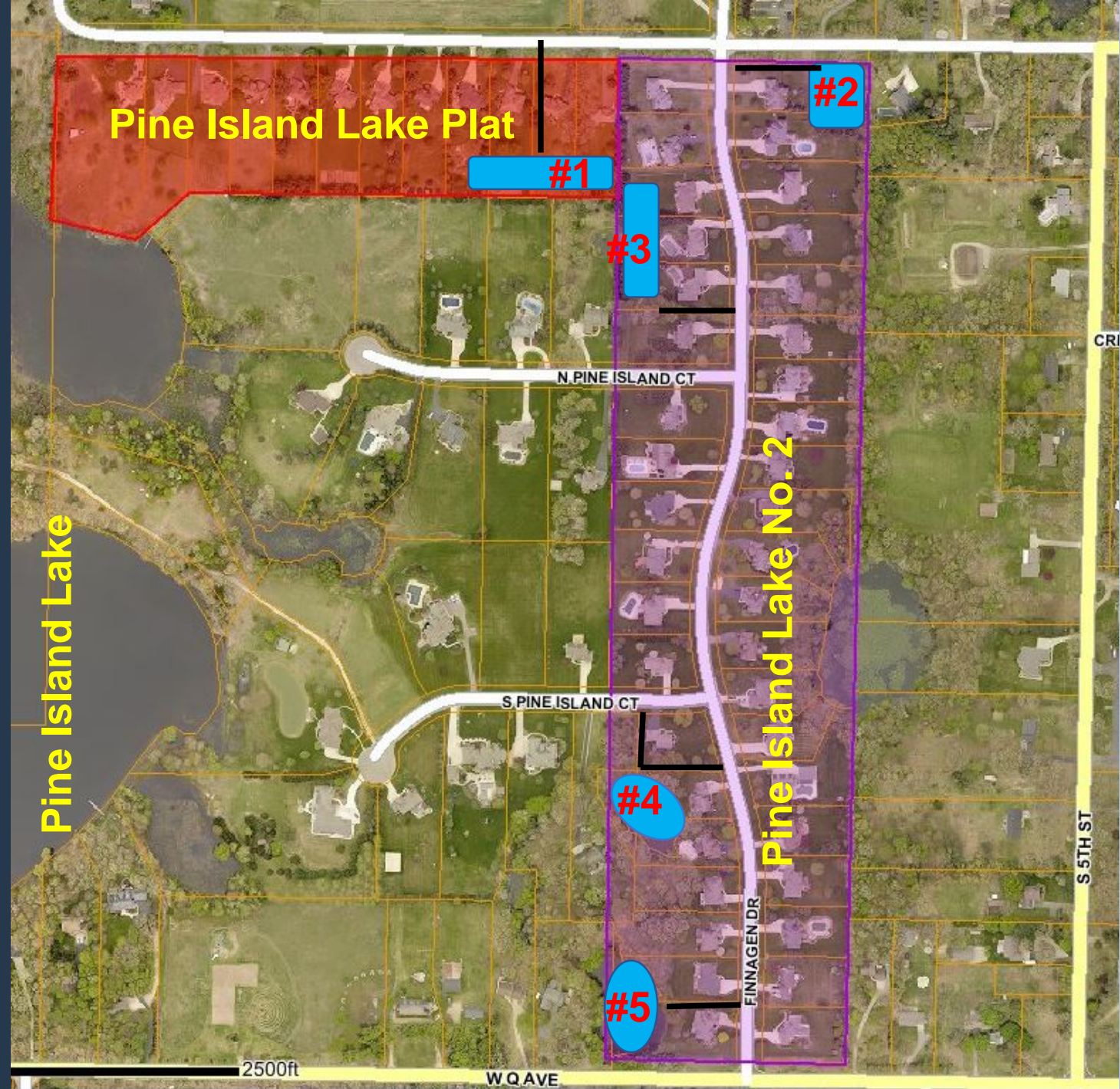
Drain Overview

- Pine Island Lake Plat consists of 12 lots and 1 Infiltration Basin.
- Pine Island Lake was established under section 433 of the Michigan Drain Code Act 40 of 1956, as amended, in 1993.
- The Infiltration Basin and inlet pipe are under the jurisdiction of the KCDC.
- All storm sewer in the road is under the jurisdiction of the Road Commission.



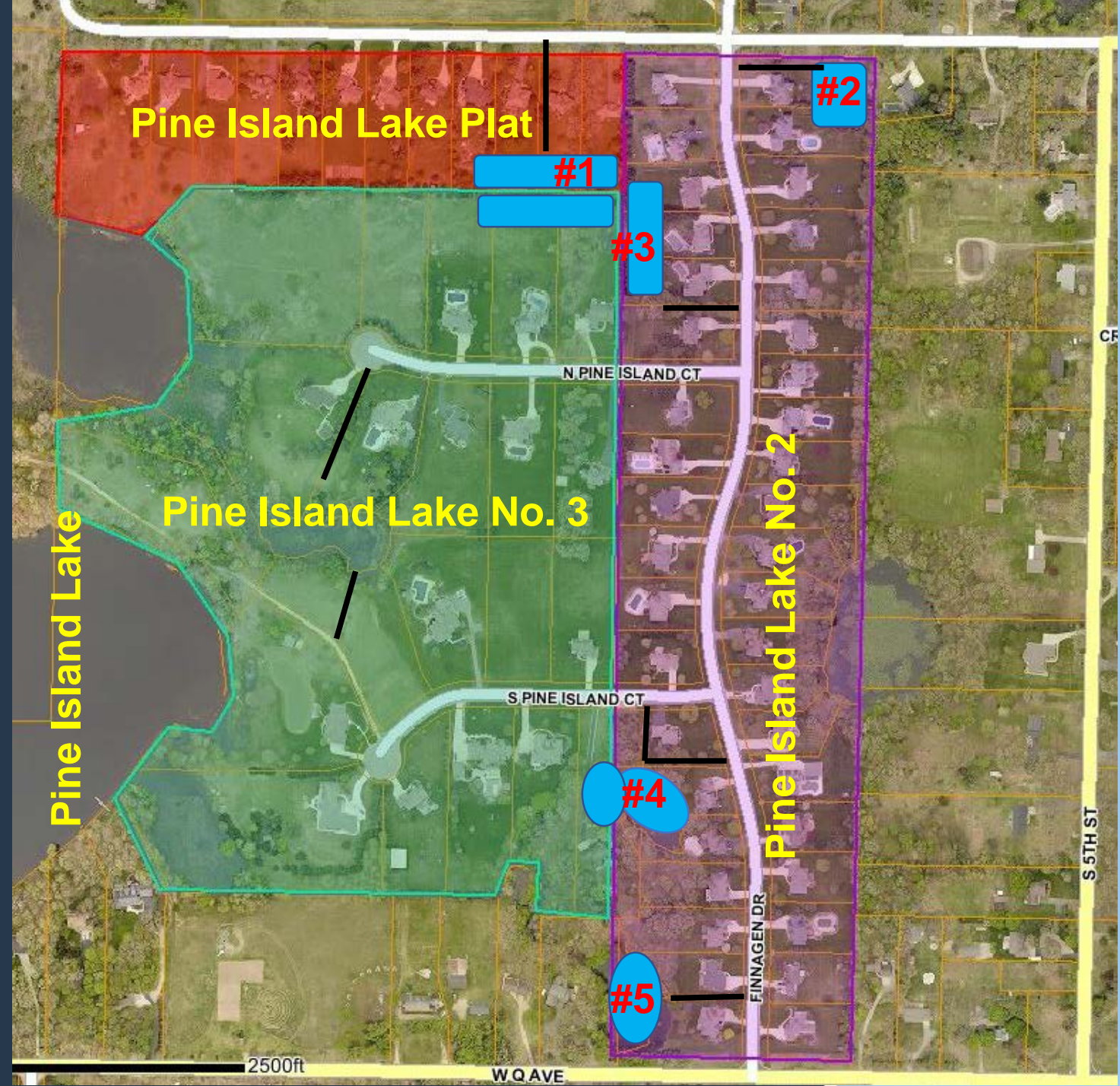
Drain Overview

- Pine Island Lake No. 2 consists of 40 lots, 2 infiltration basins and 2 unnamed ponds.
- The 433 was enlarged to include Pine Island Lake No. 2 in 1994.
- The Infiltration Basins, ponds and inlet pipes are under the jurisdiction of the KCDC.
- All storm sewer in the road is under the jurisdiction of the Road Commission.



Drain Overview

- Pine Island Lake 3 consists of 20 lots, 2 infiltration areas and 2 outlets to Pine Island Lake.
- The 433 was enlarged again to include Pine Island Lake No.3 in 1995.
- The Infiltration Basins and outlets to Pine Island Lake are under the jurisdiction of the KCDC.
- All storm sewer in the road is under the jurisdiction of the Road Commission.



Drainage Issues

- High Groundwater
- No outlet for Infiltration Basins
- Flooding of Houses and Yards
- Pumping to Road Right-of-Way



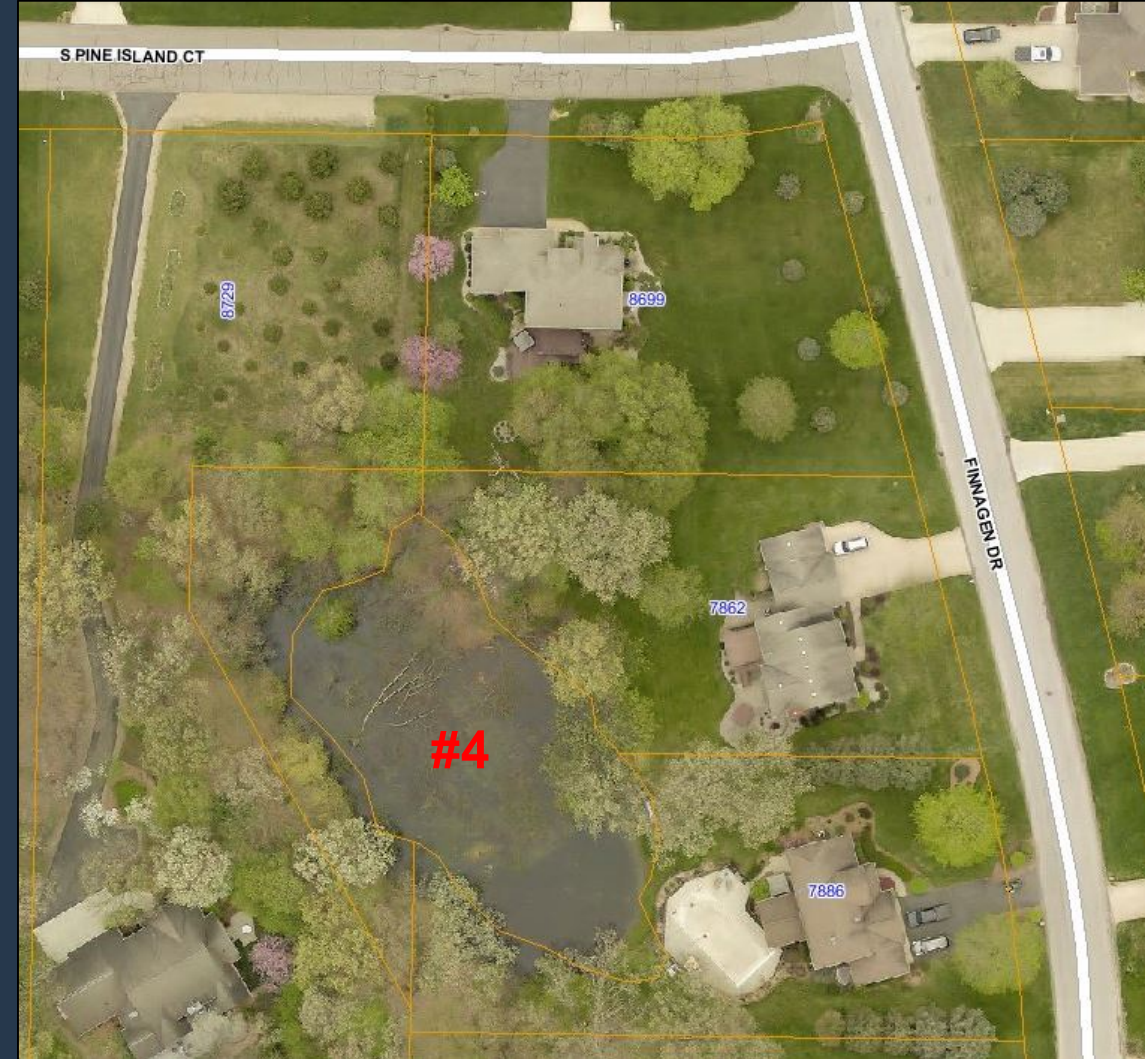
Flooded Yard



Flooded Infiltration Basin / No Outlet



Drainage Issues



Drainage Issues



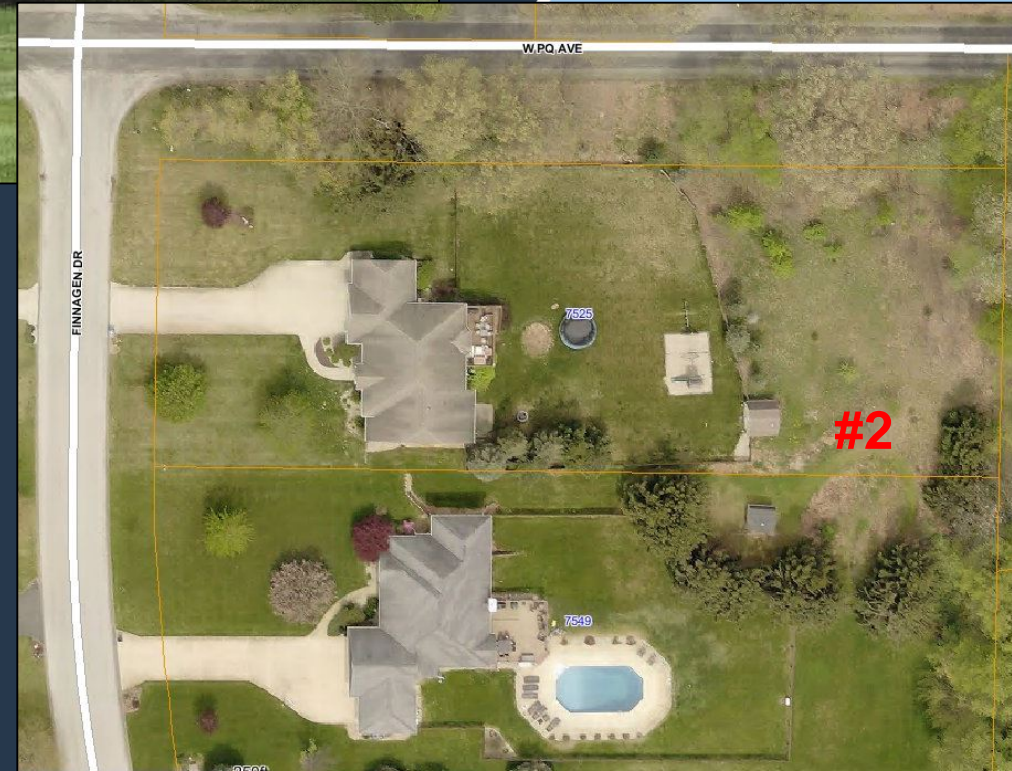
Pumping to Road
Right-of-Way



Drainage Issues

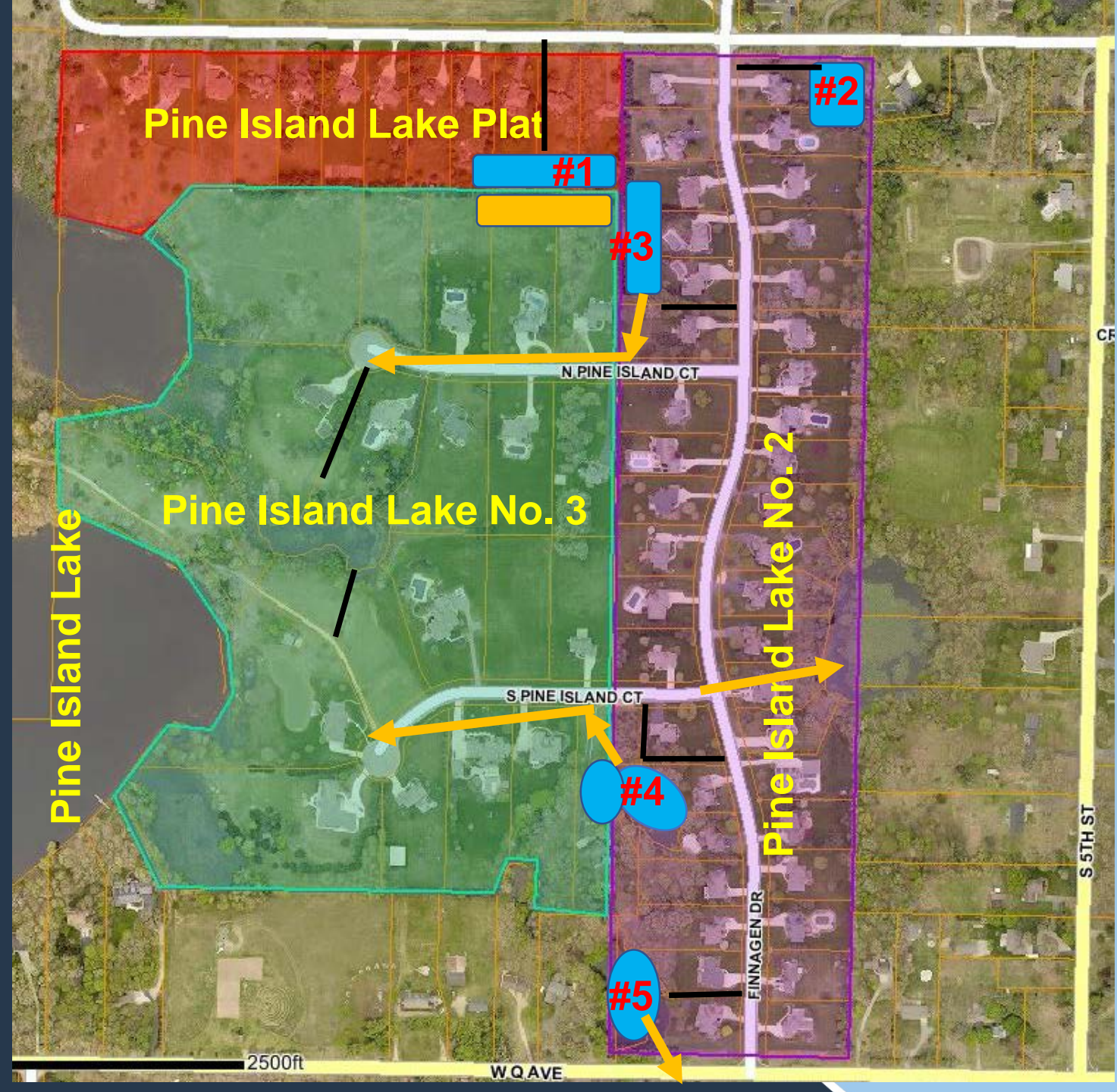


Flooded Shed & Yard



Potential Improvements

- Provide Outlets for Infiltration Basins
- Re-direct Storm Sewer
- Enlarge Infiltration Basins



What Happens Next?

- Open floor to public testimony (written and oral).
- BOD to decide if petition is necessary:
 - If the BOD finds that the petition is not necessary, the project ceases immediately and no petition can be heard for the same project until 12 months have passed.

What Happens Next?

- If the BOD finds that the petition is necessary based on health, welfare or convenience, the Drain Commissioner proceeds with a project. Each project is unique, however, in accordance with the Drain Code, the following tasks must be completed:
 1. Complete Topographic Survey / Engineering Design
 2. Obtain Easements (if necessary)
 3. Apply for Permits (if necessary)
 4. Bid Project
 5. Hold “Day of Review”
 6. Construct Project

Public Comment