

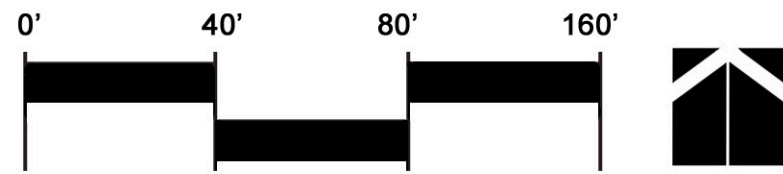
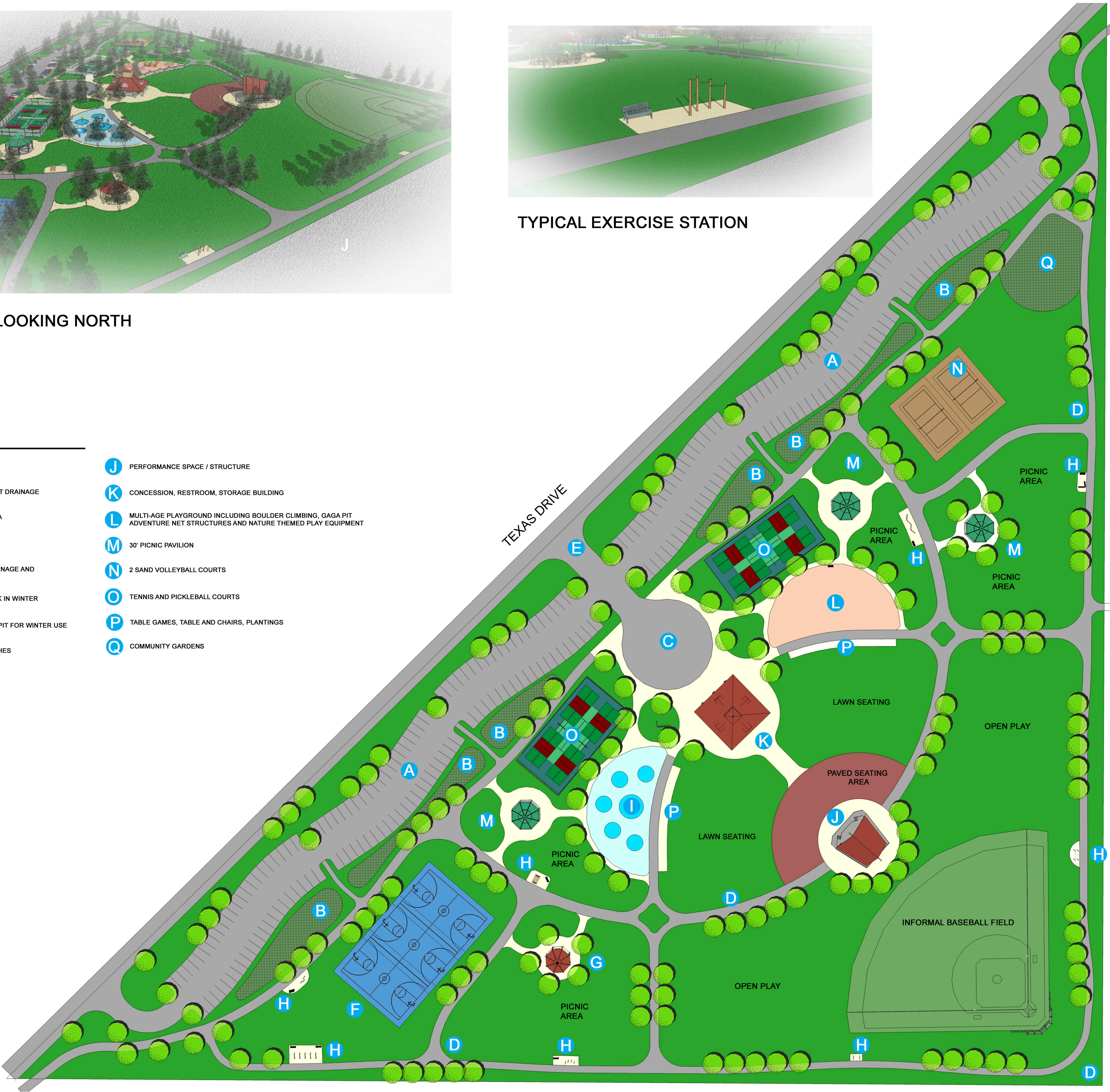
BIRDS EYE VIEW LOOKING NORTH



TYPICAL EXERCISE STATION

LEGEND

- | | |
|---|---|
| A PARKING LOT FOR 258 SPACES | J PERFORMANCE SPACE / STRUCTURE |
| B RAIN GARDEN FOR PARKING LOT DRAINAGE | K CONCESSION, RESTROOM, STORAGE BUILDING |
| C TURNAROUND / DROP-OFF AREA | L MULTI-AGE PLAYGROUND INCLUDING BOULDER CLIMBING, GAGA PIT, ADVENTURE NET STRUCTURES AND NATURE THEMED PLAY EQUIPMENT |
| D 10' PAVED TRAIL | M 30' PICNIC PAVILION |
| E MAIN ENTRY FEATURE WITH SIGNAGE AND LANDSCAPING | N 2 SAND VOLLEYBALL COURTS |
| F BASKETBALL COURTS / ICE RINK IN WINTER | O TENNIS AND PICKLEBALL COURTS |
| G 24' PICNIC PAVILION WITH FIRE PIT FOR WINTER USE | P TABLE GAMES, TABLE AND CHAIRS, PLANTINGS |
| H EXERCISE STATION WITH BENCHES | Q COMMUNITY GARDENS |
| I SPLASH PAD - 8,400 S.F. | |



TEXAS DRIVE PARK

Texas Township, Michigan
DECEMBER 2015

SCHEMATIC MASTER PLAN

